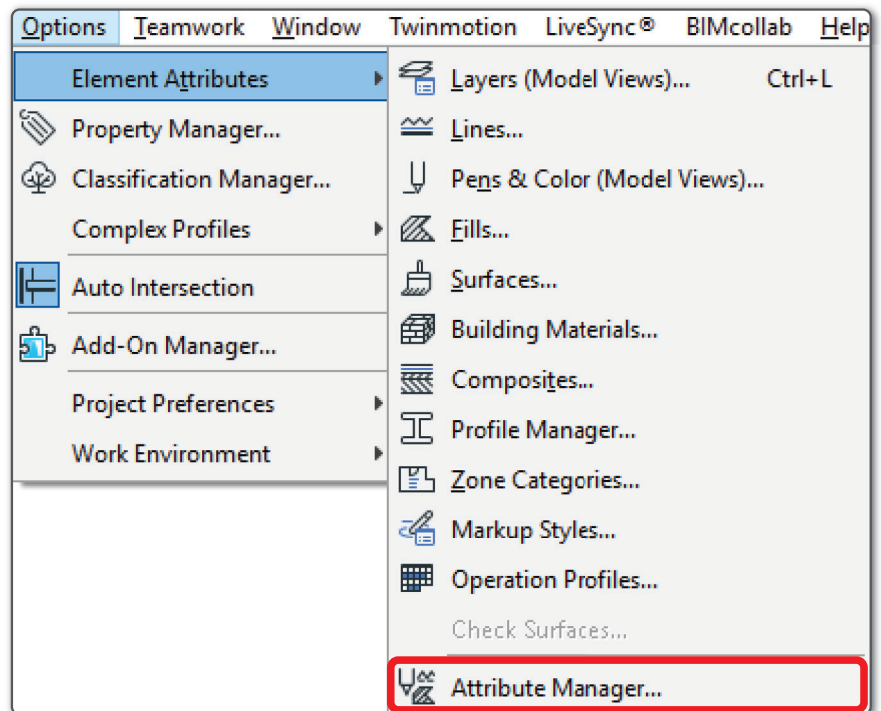


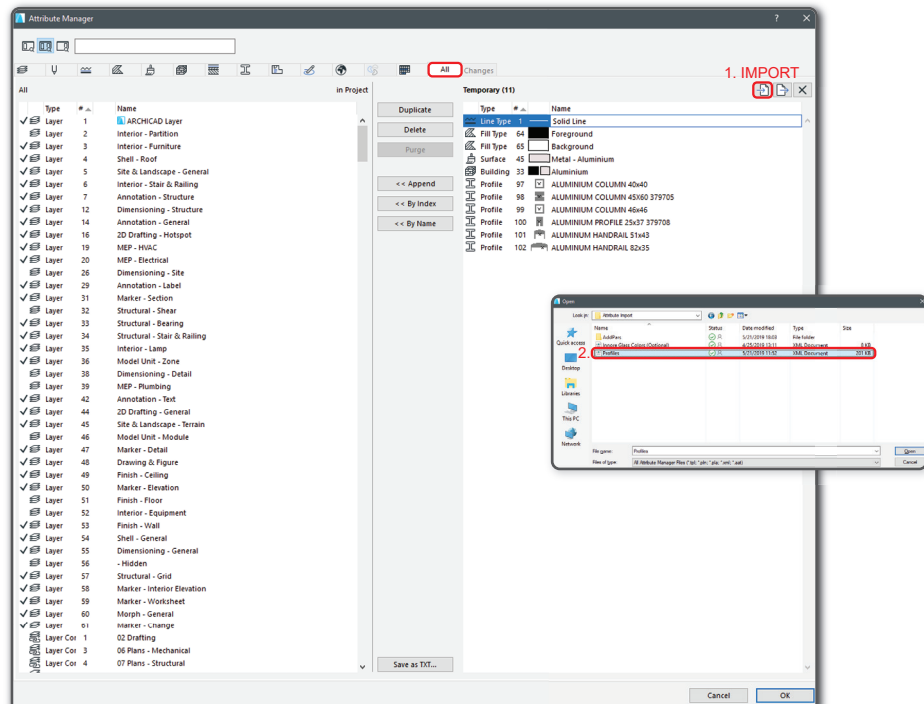
STEP 1

Import ArchiCAD Attributes. Attributes can be imported via "Options - Element Attributes - Attribute Manager"



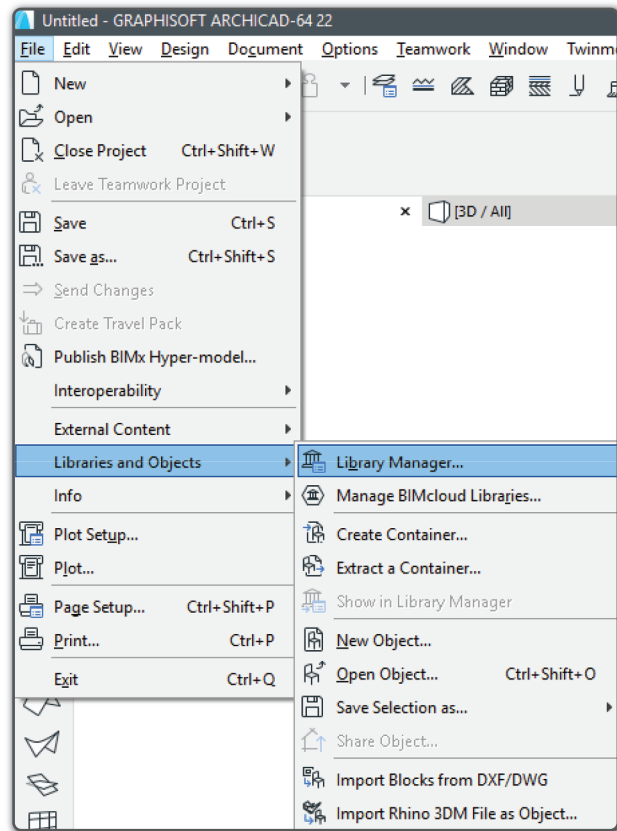
STEP 2

Choose "All", select Import from top right corner and then navigate to folder "Innore OÜ ... - Attribute Import" and select Profiles.aat file. Select all imported elements and merge attributes via "by Index".



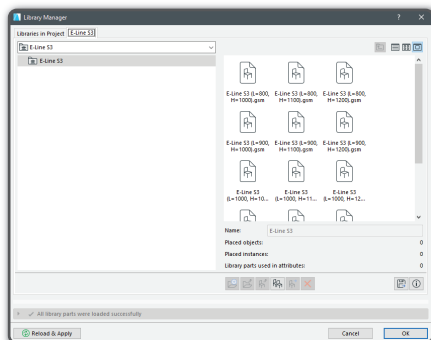
STEP 3

Import Archicad Library parts from Innore E-Line Solar catalogue. File - Libraries and Objects - Library manger

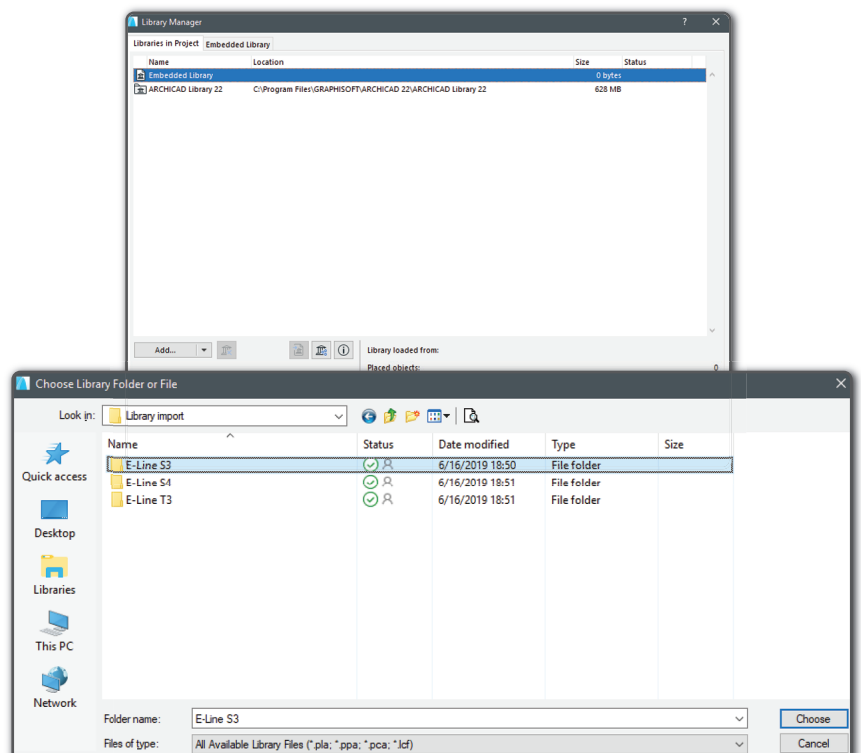


STEP 4

From new popup window, select “Add” and then navigate to Innore E-Line Solar Library import catalogue. Import all folders.

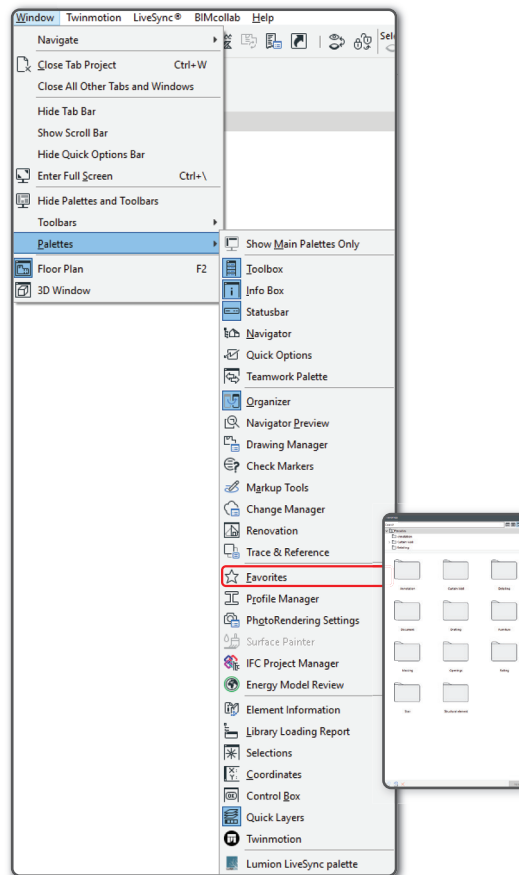


Library content after importing E-Line into “Library Manager”



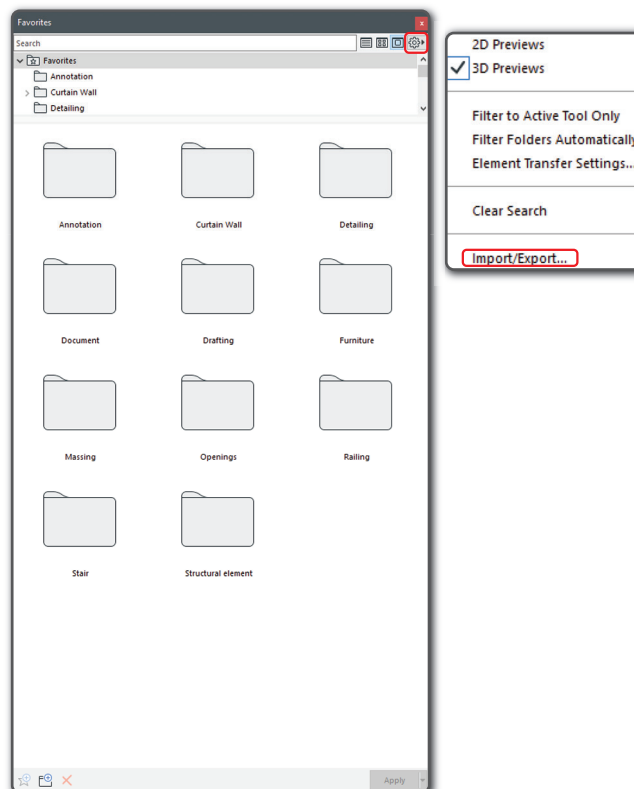
STEP 5

Import ArchiCAD Favorites. Favorites can be imported via "Window - Palettes - Favorites". A window will pop up.



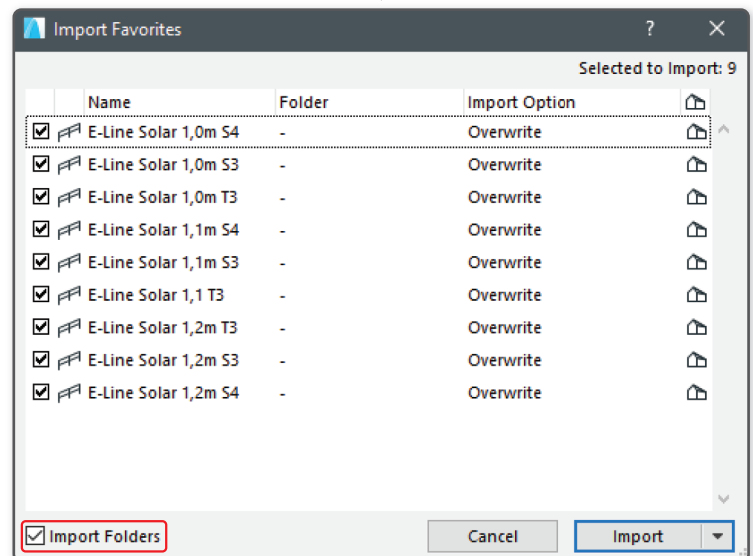
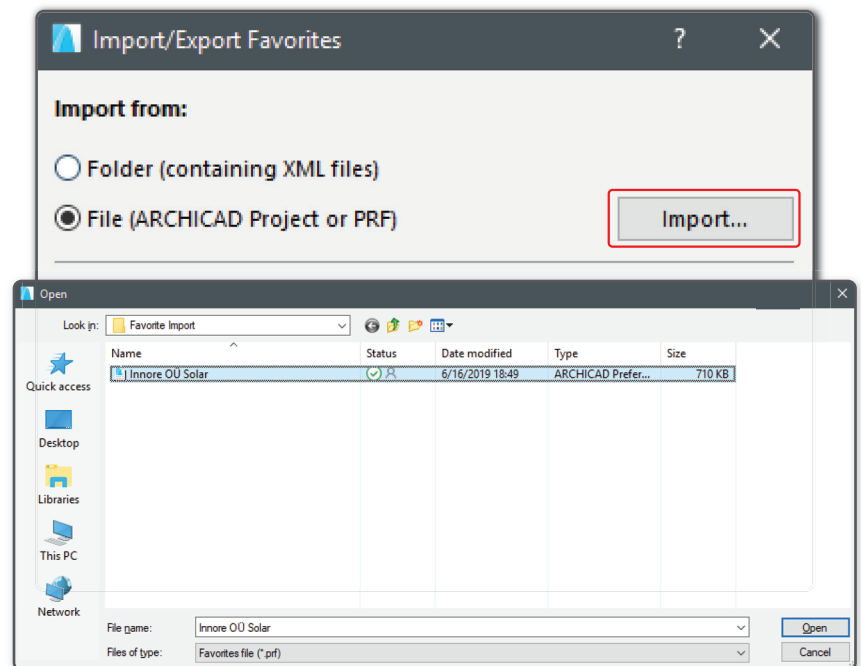
STEP 6

In the right upper corner click the gear icon, then please select Import/Export.



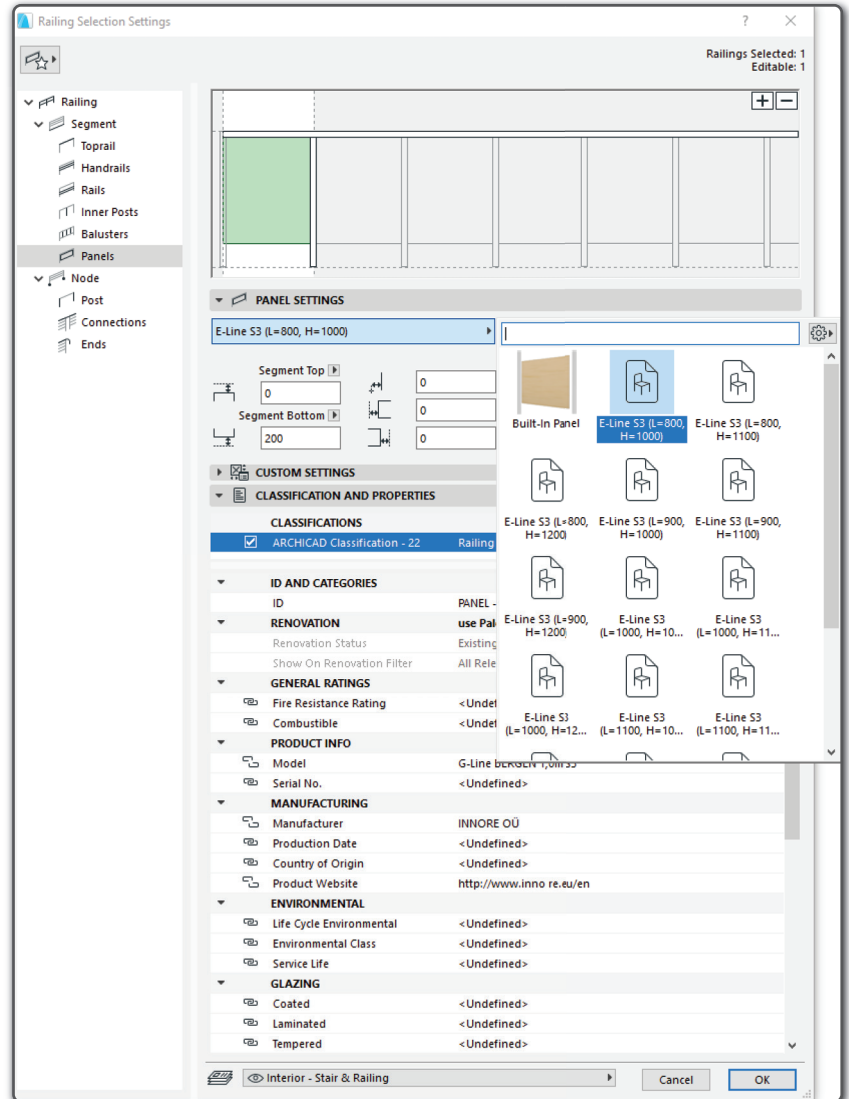
STEP 7

From new popup window, select import from "File", hit Import, navigate to folder "Ignore OÜ ... - Favorite Import" select the single file.



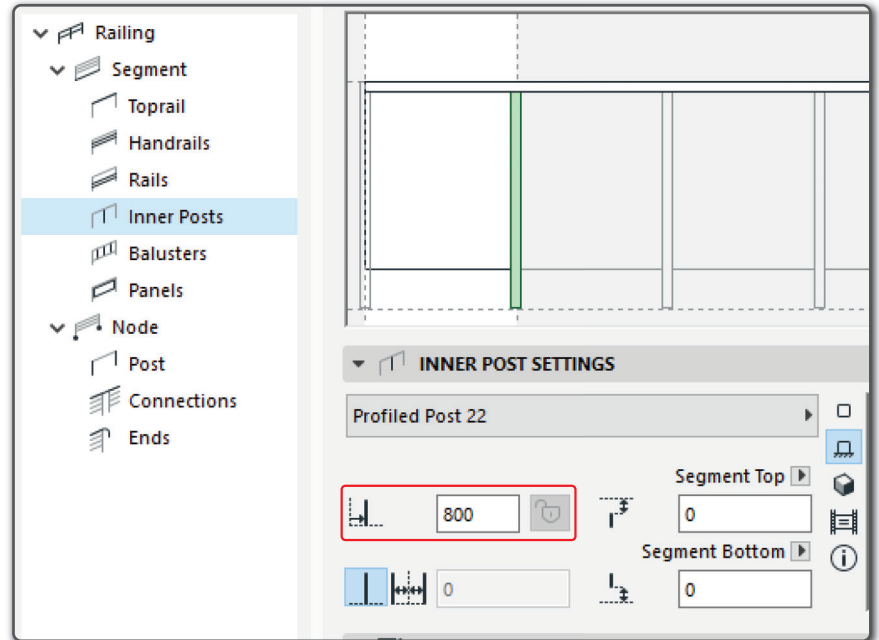
STEP 8

To have a correct visuals of railings. Select the paneling in "Railing" and change the panel type to correct panel length (L = ???? mm).

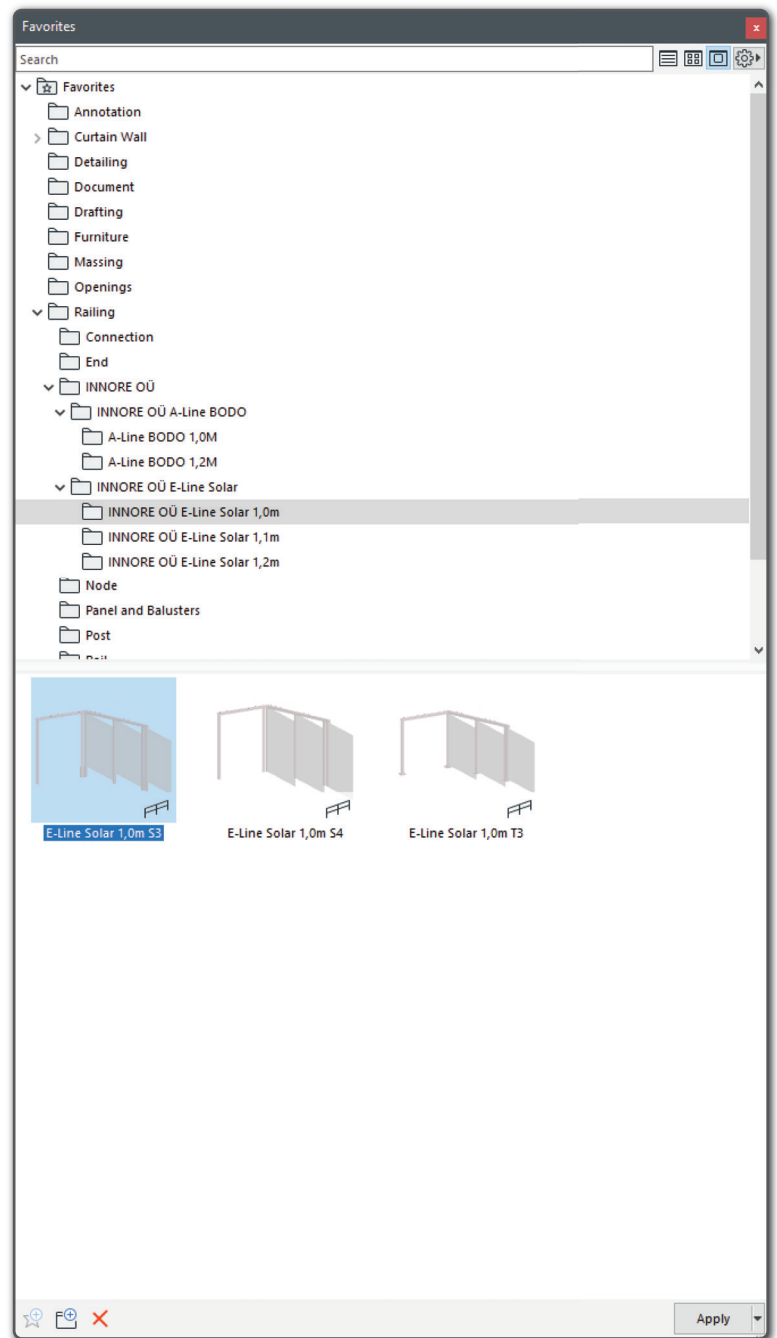


STEP 9

After adjusting paneling to correct length. Adjust “Inner Posts” for corresponding length of paneling



FINISHED IMPORT



NOTE: Make sure the "Home Story offset" is -200 in S1-S4 model types. And the offset side may differ, it depends the way you model.

NOTE: This predefined types are made for default ArchiCAD template. Importing into custom template may have a different result.

All should be good now if instruction were followed! Enjoy ArchiCAD predefined railings from INNORE OÜ!

For more information please check out Manual folder, there are links to instructions!